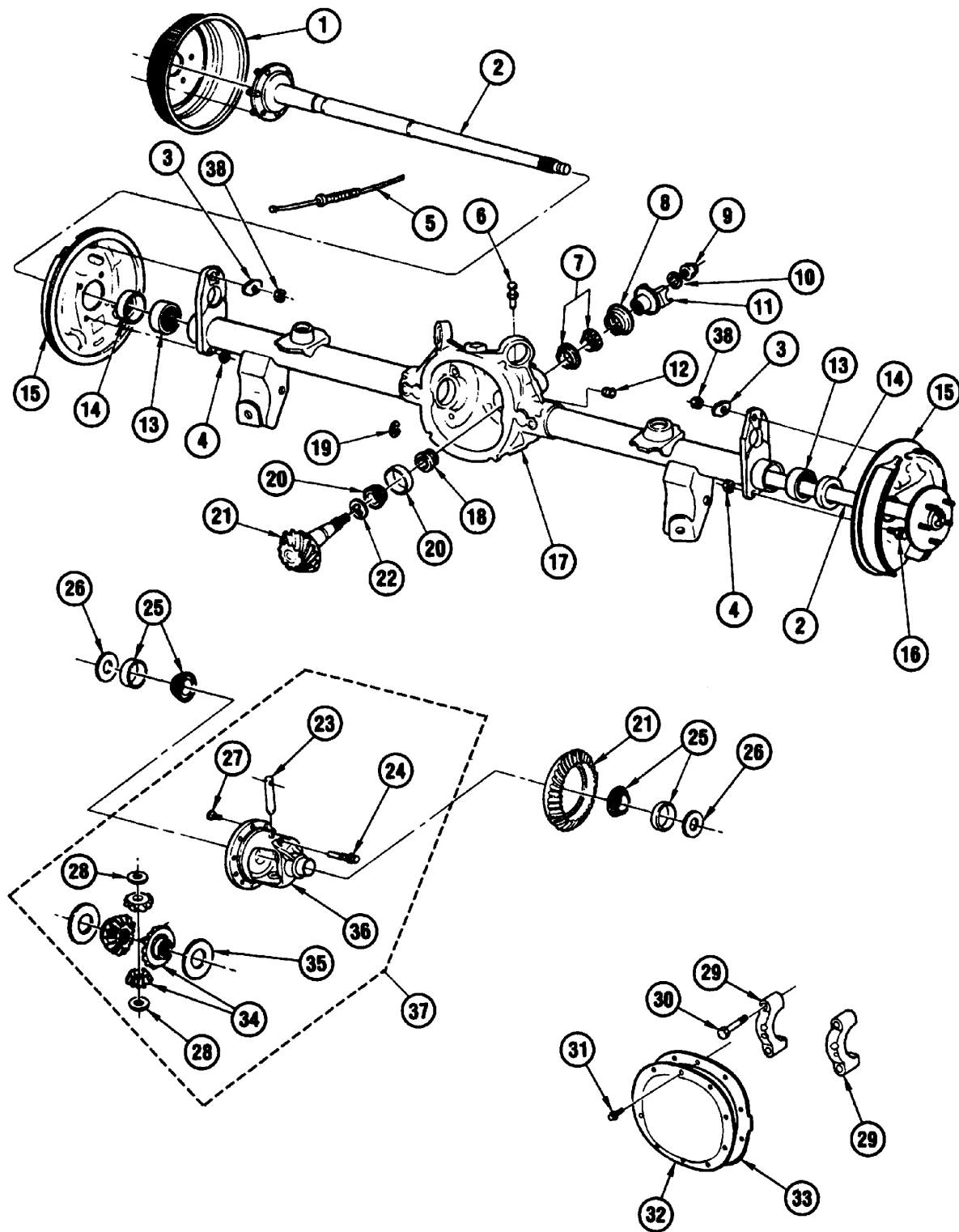


1982-1987 G AXLE ASM/REAR



1982-1987 G AXLE ASM/REAR

| | | | |
|-----|-------|---|----------|
| 1. | 5.809 | DRUM , BRK (B)(CAST IRON)(*1, 6) | 1244646 |
| 2. | 5.420 | SHAFT , (1989-90 B)(*1, 4) | 26014038 |
| | 5.812 | BOLT , WHL (B,C,D) | 1235137 |
| | 5.812 | BOLT , WHL (G) | 9590476 |
| 3. | N.S. | WASHER , ANCPIN TO MTG PLT | |
| 4. | 8.917 | NUT , BRK BKG PLT TO FLG (M6.3 – 1.0 X 10) | |
| 5. | 4.779 | CABLE , PK BRK-RH (1985-90 B35)(*1) | 10080810 |
| | 4.779 | CABLE , PK BRK-LH (1985-90 B35)(*1) | 10080809 |
| 6. | 5.387 | VENT | 1236317 |
| 7. | 5.447 | BEARING , PIN GR FRT (*3) | 9417784 |
| | 5.447 | BEARING , PIN GR FRT (*4, 5) | 9413427 |
| 8. | 5.469 | SEAL , PROP SHF PIN GR FLG (*3) | 552571 |
| | 5.469 | SEAL , PIN GR (PART OF 11)(*4) | 1243465 |
| | 5.469 | SEAL , PIN GR (PART OF 11)(*5) | 404294 |
| 9. | 5.595 | NUT , PROP SHAFT PIN GR FLG | 1260823 |
| 10. | 5.595 | WASHER , PROP SHF PIN GR FLG | 517900 |
| 11. | 5.545 | FLANGE , PIN GR (*3) | 7827670 |
| | 5.545 | FLANGE , W/DELTA, PIN GR (INCL 8)(*4, 5) | 1256654 |
| 12. | 8.971 | PLUG , HEADLESS SQ SOCKET (1/2") | 25522466 |
| 13. | 5.855 | BEARING , WHL (1982-87 G)(*1) | 7451785 |
| 14. | 5.822 | SEAL , WHL BEARING (C, D, G)(1982-86 B) | 554631 |
| | 5.822 | SEAL , WHL BEARING (1982-86 B35)(1987-90 B) | 14003417 |
| 15. | 5.001 | PLATE , BKG (1986-87 G) RH | 18013525 |
| | | PLATE , BKG (1982-87 G) LH | 18013524 |
| 16. | 5.002 | SCREW , BRK PLT TO FLG (G) | 563390 |
| | 5.002 | BOLT , BRK ASMTD HSG (C,B,D *8)(3, 5) | 10000313 |
| 17. | 5.387 | HOUSING , W/SPCR (1984-87 G)(*4) | 14079473 |
| | 5.537 | SPACER , DIFF SI BRG (*3, 4) | 9775809 |
| | 5.381 | BUSHING , UPR CONT ARM (B,C,D)(LGT GREEN) | 10000953 |
| | 5.381 | BUSHING , UPR CONT ARM (G) | 10000068 |
| 18. | 5.453 | SPACER , PIN GR BRG (*3) | 9785792 |
| | 5.460 | SPACER , PIN GR BRG (*4, 5) | 1234726 |
| 19. | 5.422 | LOCK , SHF (*3) | 344171 |
| | 5.422 | LOCK , SHF (.150")(*4, 5) | 3833322 |
| | 5.422 | LOCK , SHF (.155")(*5) | 3959067 |
| 20. | 5.484 | BEARING , PIN GR (*3) | 22510042 |
| | 5.484 | BEARING , PIN GR (*4)(*5, 7) | 9418356 |
| | 4.105 | ROLLER , PIN GR (*4, 5) | 9418357 |
| | 5.386 | RACE , (5.484) (*5) | 9418358 |
| 21. | 5.529 | GEAR , RING & PINION (G)(1984-87)(GU6)(INCL 27)(*1, 4) | 26006449 |
| 22. | 5.460 | SHIM , PIN GR BRG (.030-.034)(B,C,D)(1984-87 G)(*1)(*4, 5) | 1394894 |
| 23. | 5.517 | SHAFT , DIFF PIN GR (C,D)(1984-87 G)(1983-87 B)(PART OF 34)(*1, 4) | 14006401 |
| 24. | 5.518 | BOLT , DIFF PIN GR SHF LK (PART OF 34) | 14056196 |
| 25. | 5.536 | BEARING , DIFF SI (*3, 4) | 9420095 |
| | 5.536 | BEARING , DIFF SI (*5) | 9418390 |
| 26. | 5.537 | SHIM , DIFF BRG (.064-.070)(*1)(*3, 4) | 3853759 |
| 27. | 5.531 | BOLT , HYP DR GR (7/16 – 20 X .88 LH THD)(PART OF 21) | 1241564 |
| 28. | 5.542 | WASHER , DIFF PIN GR THR (C,B,D)(1984-87 G)(PART OF 34)(*1, 4) | 3984818 |
| 29. | N.S. | CAP , DIFF CAR BRG | |
| 30. | 8.900 | BOLT , HEX (.437 – 14 X 2.25) | 454947 |
| 31. | 8.900 | BOLT , HWH SERR FACE (5/16" – 18 X 7/8") | |
| 32. | 5.398 | COVER , DIFF CARR (C,D,B)(1984-87 G)(*4, 7) | 26008172 |
| | 5.508 | MAGNET , DIFF CARR CHIP (4.105)(*3, 4) | 8665830 |
| 33. | 5.339 | GASKET , DIFF CARR CVR (*3) | 26016661 |
| | 5.339 | GASKET , DIFF CARR CVR (*5) | 9778192 |
| | 5.339 | GASKET , DIFF CARR CVR (*4) | 3993593 |
| 34. | 5.527 | GEAR KIT , W/PIN GR, DIFF SI (EXC G80)(INCL 23,24,28,35)(*1)(*4, 7) | 26012906 |
| | 5.528 | GEAR , DIFF SI (G80)(*4) | 231075 |
| | 5.526 | GEAR , DIFF PINION | 6270977 |
| 35. | 5.543 | WASHER , DIFF SI GR (1984-87 G)(PART OF 34)(*4) | 1235873 |
| 36. | 5.510 | CASE , DIFF (MACH)(1986-87 G EXC G80)(*1, 4) | 26010481 |
| | 5.529 | GEAR , RING & PINION (G)(1984-87)(GU6)(INCL 27)(*1, 4) | 26006449 |
| 37. | 5.510 | DIFFERENTIAL ASM , G (3.8-7) 8.50 DIA RNGR, 3.42R, (G80)(SEE 5-15) | 26003426 |
| | 5.510 | DIFFERENTIAL ASM , G (3.8-7) 8.50 DIA RNGR, 3.42R, (EXC G80) | 26006445 |
| 38. | 5.838 | NUT , UPR/LWR CONT ARM (M14)(1984-90 B)(8.917) | 11500748 |
| | 5.838 | NUT , UPR CONT ARM (M14X2)(D)(8.917) | 11500748 |

NOTE 1: SEE PARTS CATALOG FOR ADDITIONAL USAGE
 NOTE 2: SEE GROUP 5.000 FOR DETAILED ILLUSTRATED VIEW
 NOTE 3: 7.50" RING GEAR
 NOTE 4: 8.50" RING GEAR
 NOTE 5: 8.75" RING GEAR
 NOTE 6: 11.0" X 2.0" REAR BRAKE DRUM (WEIGHT = 23#)
 NOTE 7: COMPONENTS SERVICED