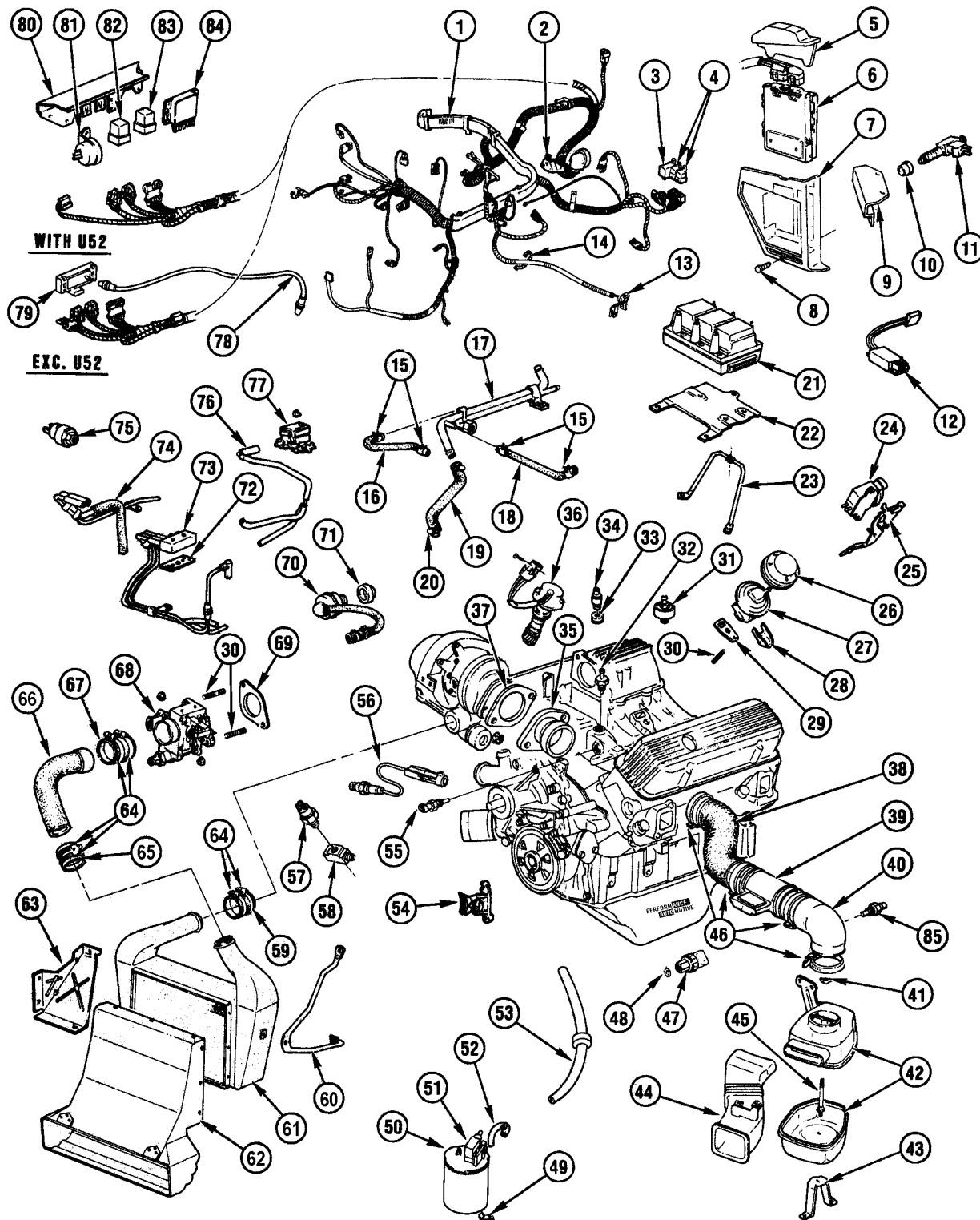


1986-1987 G EMISSION CONTROLS-V6 (LC2/3.8-7) TURBO



## 1986-1987 G EMISSION CONTROLS-V6 (LC2/3.8-7) TURBO

1.	2.252	<b>HARNES</b> , ENG/ECM	12060376
2.	N.S.	<b>RETAINER</b> , WIRING HARNES	
3.	1.055	<b>RELAY</b> , ENG COOL FAN SHUTOFF DELAY	25527402
4.	1.055	<b>RELAY</b> , ENG COOL FAN (2)(HI/LO SPD)	25526984
5.	3.671	<b>COVER</b> , MDL SHRD SI F/PNL (14.630)	20540331
6.	3.670	<b>CONTROLLER</b> , ECM	1227148
	3.670	<b>CALIBRATOR</b> , PROM('87 49 state)('86 p/n:16060600)	16051877
7.	3.671	<b>HOUSING</b> , CONT MODULE	20540326
8.	14.630	<b>FASTENER</b> , COVER TO HSG MDL	20540336
9.	2.440	<b>BRACKET</b> , DIAG CONN	25509622
10.	3.885	<b>RETAINER</b> , CRUISE & CONV VLV	1612303
11.	3.885	<b>VAVLE</b> , CRUISE VAC & TRANS CONV REL	1645516
12.	3.682	<b>SENSOR</b> , VEH SPD (CLUSTER MTD)(EXC U52)	25007463
13.	4.057	<b>CLIP</b> , CONT MDL WIRING HARNES	25523495
14.	8.965	<b>RETAINER</b> , PLASTIC 7" ADJUSTABLE	
15.	8.948	<b>CLAMP</b> , WORM GEAR HEX SLOT SCREW (.250 X .625) SS	
16.	8.846	<b>HOSE</b> , HTR INLET PIPE TO THROTTLE BODY	25525401
17.	8.846	<b>PIPE</b> , HTR INLET & OUTLET	25525280
18.	3.341	<b>HOSE</b> , THROTTLE BODY WAT OUTLET TO HTR HOSE	25525402
19.	8.846	<b>HOSE</b> , HEATER OUTLET	25525228
20.	8.948	<b>CLAMP</b> , WORM GEAR (.62 X 1.25)	
21.	N.S.	<b>MODULE ASM</b> , ELEK IGN/SERV BY:	
	2.170	<b>COIL</b> , IGNITION (C3I)	12353801
	2.383	<b>MODULE</b> , ELECT IGN (C3I-COIL)(TYPE 1 MAGNA)	24503624
	2.170	<b>GASKET</b> , COIL & MODULE (C3I)(MAGNAVOX)	25526450
22.	2.383	<b>BRACKET</b> , ELEK IGN MODULE	25525208
23.	2.383	<b>BRACE</b> , ELEK IGN MDL	25525209
24.	3.670	<b>CONTROL</b> , EGR VALVE VAC	25527186
	3.670	<b>FILTER</b> , EGR VAC VALVE	10159525
25.	3.672	<b>BRACKET</b> , CONT EGR VLV VAC	25526272
26.	3.671	<b>COVER</b> , EGR VALVE	17069228
27.	3.670	<b>VALVE</b> , EGR	17111570
28.	3.671	<b>CLAMP</b> , EGR VALVE	25524527
29.	3.680	<b>GASKET</b> , EGR VALVE	25530599
30.	8.981	<b>STUD</b> (M8 X 1.25 X 15 BOTH ENDS)(3.275)	1635540
31.	2.383	<b>SENSOR</b> , ESC KNOCK	1997562
32.	1.055	<b>SWITCH</b> , FAN TEMP	3053190
33.	1.745	<b>GROMMET</b> , C/CASE VLV	1381487
34.	1.745	<b>VALVE</b> , C/CASE VENT	25095468
35.	3.342	<b>ADAPTER</b> , AIR TURBO BOOST (INLET BELL)	25525340
36.	2.383	<b>SENSOR</b> , W/DRIVE, CAM SHAFT	25516915
	2.383	<b>SENSOR</b> , CAM CAMSHAFT	25518357
	2.363	<b>O-RING</b> , ON SENSOR SHAFT	1959331
	8.906	<b>SCREW</b> , RD HD C/R 6-32X3/4 CAD/ZINC (A/R)	
37.	3.336	<b>GASKET</b> , THROTTLE BODY (TO TURBOCHARGER)	25516408
38.	3.417	<b>DUCT</b> , RR AIR INT/MASS AIR FLOW SEN TO TURBO ADAP	25525662
39.	3.682	<b>SENSOR</b> , MASS AIR FLOW	25007866
40.	3.417	<b>DUCT</b> , AIR INT INTER (INCL AIR TEMP SENSOR)	25095187
41.	8.920	<b>NUT</b> , WING (M8X1.25)	14057918
42.	3.402	<b>AIR CLEANER</b> , TURBO	25095331
43.	3.405	<b>SUPPORT</b> , AIR CLEANER	25518024
44.	3.417	<b>DUCT</b> , FRT AIR INT/TO A/CL	25525539
45.	3.403	<b>STUD</b> , A/CL TO MT BRACKET	1258729
46.	3.417	<b>CLAMP</b> , AIR INT DUCT TO A/CL	14086928
47.	9.275	<b>SWITCH</b> , A/C CMPR	25527510
48.	8.927	<b>O-RING</b> , (5/16" ID RUBBER)	3093509
49.	8.950	<b>CLIP</b> , CNSTR (SAE #1060/1070-.072)	
50.	3.130	<b>CANISTER</b> , FUEL VAPOR	17085935
	3.130	<b>FILTER</b> , CNSTR AIR INL (4.5 DIA)	7026014
51.	3.140	<b>SOLENOID</b> , VPR CNSTR	25526954
52.	8.962	<b>HOSE</b> , FRT VPR (5/16)	3947770
53.	N.S.	<b>HARNES</b> , CNSTR (SERV BY)	
	3.130	<b>VALVE</b> , CHECK	25525315
	8.962	<b>HOSE</b> (7/32")	
54.	2.383	<b>SENSOR</b> , CR/SHF POSITION	25535480
55.	3.682	<b>SENSOR</b> , CLNT TEMP (1.150)	25036979
56.	3.682	<b>SENSOR</b> , EXH OXYGEN (AFS-20)	25162693
57.	1.800	<b>SWITCH KIT</b> , OIL PRESSURE	25036378
58.	3.358	<b>FITTING</b> , OIL FEED PIPE	1259890
59.	3.374	<b>HOSE</b> , TURBO AIR INCLR (INCLR TO TURBO)	25525234
60.	3.373	<b>BRACKET</b> , TURBO AIR INCLR TO ENG-LH	25525195
61.	3.373	<b>INTERCOOLER</b> , TURBO AIR	25527604
62.	3.373	<b>DUCT</b> , TURBO AIR INCLR CLG	25526377

### 1986-1987 G EMISSION CONTROLS-V6 (LC2/3.8-7) TURBO

63.	3.373	<b>BRACKET</b> , TURBO AIR INCLR-RH	<b>25526408</b>
64.	3.417	<b>CLAMP</b> , TURBO A/CL HSE	<b>25523315</b>
65.	3.374	<b>HOSE</b> , TURBO AIR INCLR (INCLR TO THROT BODY TUBE)	<b>25525232</b>
66.	3.374	<b>TUBE</b> , TURBO AIR INCLR (CONN BTWN CLR & THROT BDY)	<b>25525230</b>
67.	3.374	<b>HOSE</b> , TURBO AIR INCLR (INCLR TUBE TO THROT BODY)	<b>25525233</b>
68.	3.335	<b>BODY</b> , THROTTLE	<b>25525359</b>
69.	3.336	<b>GASKET</b> , THROT BODY	<b>25517008</b>
70.	N.S.	<b>PIPE ASM</b> , C/CASE VENT/SERV BY:	
	1.745	<b>FILTER</b> , VENT	<b>557240</b>
	1.745	<b>PIPE</b> , CASE VENT FILTER	<b>25525231</b>
	1.745	<b>ELBOW</b> , VENT PIPE (RUB GROM)	<b>25526950</b>
	8.962	<b>HOSE</b> (3/4")	<b>9438383</b>
	N.S.	<b>CLAMP</b> , VENT HOSE	
71.	1.745	<b>GROMMET</b> , RH VLV CVR	<b>1264486</b>
72.	2.420	<b>GASKET</b> , HARN VAC	<b>25537227</b>
73.	3.675	<b>HARNESS</b> , EGR/PURGE/FUEL/VAC	<b>25525671</b>
74.	3.675	<b>HARNESS</b> , PCV BOOST GAUGE VAC	<b>25536303</b>
75.	9.275	<b>SWITCH</b> , W/O-RING, CMPR CUTOFF (1986)	<b>3041336</b>
76.	3.675	<b>HOSE</b> , WASTEGATE	<b>25525576</b>
77.	3.342	<b>VALVE</b> , SOL WASTEGATE	<b>1997157</b>
	2.408	<b>FILTER</b> , SOL VLV	<b>801528</b>
78.	8.964	<b>TUBING</b> , M.A.P. SEN (3/16X25) STEEL	<b>3696822</b>
	8.962	<b>HOSE</b> , M.A.P. SEN (5/32X25)	<b>9438381</b>
79.	3.682	<b>SENSOR</b> , M.A.P. (EXC U52 DIGITAL DASH)	<b>16009886</b>
80.	2.483	<b>BRACKET</b> , MULTIUSE RELAY	<b>25518460</b>
81.	9.755	<b>SWITCH</b> , PRESS PWR LGT (W/U52 DIGITAL DASH)	<b>25503871</b>
82.	3.900	<b>RELAY</b> , FUEL PUMP	<b>10038490</b>
83.	9.277	<b>RELAY</b> , A.C. CMPR	<b>10034222</b>
84.	2.383	<b>MODULE</b> , ELEK SPARK CONT (1986)	<b>16022614</b>
	2.383	<b>MODULE</b> , ELEK SPARK CONT (1987)	<b>16051654</b>
85.	3.415	<b>SENSOR</b> , AIR INT DUCT	<b>25037034</b>